



SERIES B FILTERS

BAYONET CONNECTION FILTERS

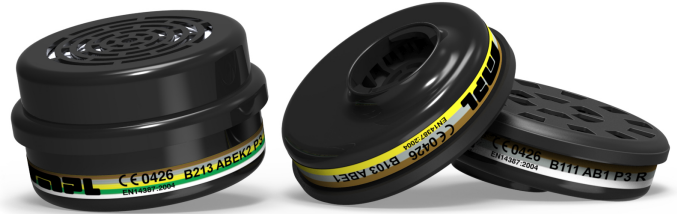
BAYONET CONNECTION

Intuitive connection that allows a fast and safe fastening of the respirator.

CERTIFICATION

Series B filters are:

- Certified as per European Regulation [2016/425](#) (Personal Protection Equipments).
- Certified as Category III PPE, according to standards [EN 143:2000 + A1:20006](#) and [EN 14387:2004+A1:2008](#).
- Marked CE.



SELECTION GUIDE

CLASS

Determines the amount of activated carbon contained and the expected minimum duration.

Class 1 = 1000 ppm*





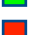


Class 2 = 5000 ppm

*parts per million

IMPORTANT

MPL rejects any type of responsibility, direct or indirect, arising from the improper or inappropriate use of both the equipment and the instructions. It is the user who has to determine the suitability of the products for the intended use.

COLOR CODING

- A  = organic vapours and gases (boiling point > 65°C)
- AX  = organic vapours and gases (boiling point < 65°C)
- B  = inorganic gases
- E  = acid vapours and gases
- K  = Ammonia and Ammonia derivatives vapours and gases
- Hg  = Mercury and Mercury vapours
- P  = particles/dust

COMPATIBLE DEVICES

SERIES 1000



SERIES 2000



SERIES 4000





SERIES B FILTERS

BAYONET CONNECTION FILTERS

MATERIALS

FILTER CONTAINER	Acrylonitrile Butadiene Styrene
FILTERING MATERIAL (dust)	Pleated fiber mesh
FILTERING MATERIAL (gases and vapours)	Activated carbon

STORAGE

DURATION	5 years
TEMPERATURE	-10 °C / +50 °C
RELATIVE HUMIDITY	70% max.

TECHNICAL INFORMATION

CODE	DESCRIPTION	WEIGHT (g) +/- 3	NPF (HALF MASKS)	NPF (FULL FACE MASKS)
B101	A1	89	50*TLV	2000*TLV
B102	AB1	100	50*TLV	2000*TLV
B103	ABE1	100	50*TLV	2000*TLV
B104	ABEK1	106	50*TLV	2000*TLV
B105	E1	100	50*TLV	2000*TLV
B106	K1	112	50*TLV	2000*TLV
B110	A1 P3 R	135	48*TLV	1000*TLV
B111	AB1 P3 R	139	48*TLV	1000*TLV
B112	ABE1 P3 R	139	48*TLV	1000*TLV
B113	ABEK1 P3 R	151	48*TLV	1000*TLV
B114	B1 P3 R	139	48*TLV	1000*TLV
B201	A2	113	50*TLV	2000*TLV
B202	AB2	100	50*TLV	2000*TLV
B203	ABE2	125	50*TLV	2000*TLV
B204	ABEK2	139	50*TLV	2000*TLV
B205	B2	125	50*TLV	2000*TLV
B206	E2	125	50*TLV	2000*TLV
B207	K2	142	50*TLV	2000*TLV
B210	A2 P3 R	149	48*TLV	1000*TLV
B211	AB2 P3 R	139	48*TLV	1000*TLV
B212	ABE2 P3 R*	175	48*TLV	1000*TLV
B213	ABEK2 P3 R*	180	48*TLV	1000*TLV
B214	B2 P3 R*	175	48*TLV	1000*TLV
B215	E2 P3 R*	170	48*TLV	1000*TLV
B216	K2 P3 R*	187	48*TLV	1000*TLV
B300	AX	111	50*TLV	2000*TLV
B301	AX P3 NR*	157	48*TLV	1000*TLV
B302	P3 R	67	48*TLV	1000*TLV

NPF: Nominal Protection Factor

TLV: Threshold Limit Value