



# SERIES 1000

## REUSABLE HALF MASK RESPIRATORS

CE EN 140:1998



1000C RESPIRATOR



1000T RESPIRATOR



### FEATURES

- Single filter reusable half mask respirator.
- Two facepiece material options (EPDM or TPE rubber).
- Light weight design plus wide sealing area provides all-day comfort.
- Low breathing resistance due to its 2 exhalation valves.
- Low profile, facepiece design fits well under welding helmets and safety goggles.
- Adjustable head harness for extra comfort.
- Wide field of vision.

### CERTIFICATION

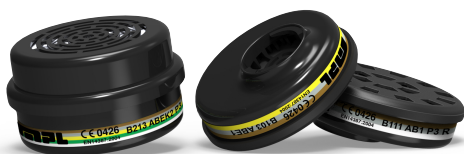
Series 1000 reusable half mask respirator meets the requirements of EN 140:1998 European Standard and is CE marked in accordance with European Regulation (EU) 2016/425, as Category III PPE (Personal Protective Equipment).

MPL's managing system is [ISO 9001:2015](#) certified.



### CARTRIDGES & FILTERS

Series 1000 reusable half mask respirators must be used with MPL's bayonet connection [Series B cartridges & filters](#).



### PACKAGING

MODEL	DESCRIPTION	DISPLAY
1000C	EPDM rubber	42 units per box
1000T	TPE rubber	42 units per box

# SERIES 1000

## REUSABLE HALF MASK RESPIRATORS

### EXPIRY

Use the respirator before the expiration date printed on box.

### IMPORTANT NOTICE TO USERS

You are responsible to understand and follow all warnings, restrictions and other information contained in the instruction manual before you enter a contaminated work area.

### WARNING TO USER

1. This respirator does not supply oxygen (O<sub>2</sub>), and must be used in a ventilated work environment with an oxygen volume superior or equal to 17%.
2. Use the appropriate filter in each case, depending on concentration and type of contaminant.
3. Every 1000C/1000T respirator must be fitted with 1 filter.
4. This respirator will in no case be used as protection against Carbon Monoxide.
5. This respirator must not be altered or modified.
6. This respirator must not be used in containers, pits, sewers or confined places with no ventilation.
7. Any facial feature hindering the perfect sealing of the respirator on the user's face (such as beards, etc.), must be removed.
8. If any respirator component is damaged, or if the user has breathing difficulties and/or feels ill or faint, the work area must be abandoned immediately.

### BEFORE EVERY USE

1. Make sure the respirator includes all its parts: harness and fastening straps, valve-holder/ filter-holder, inhaling and exhaling valves.
2. Make sure the respirator is in perfect conditions and all its parts are free of dirt, tears, cracks, or knocks. If any of these appear, it must be discarded.
3. Make sure the type of filter selected is appropriate for the specific use of the respirator.

### MAINTENANCE

Is advisable to proceed as following in order to keep the respirator in optimum conditions::

1. To store the clean and thoroughly dry respirator in a sealed bag.
2. To check the inhalation and exhalation valves, and to keep them completely clean and undeformed.
3. To check the perfect elasticity of the elastic straps.
4. To make sure the respirator is in perfect conditions, with all its parts free of dirt, tears, cracks, or knocks . If any of the parts are damaged, the respirator must be replaced and/or discarded.



**MPL S.L.**  
86, Carles Buïgas Street  
"Can Magre" Industrial Zone  
Santa Eulàlia de Ronçana, 08187  
Barcelona - Spain  
TEL: +34 (93) 102-4003  
E-mail: [administracion@mplsl.eu](mailto:administracion@mplsl.eu)

TDS\_Series\_1000